

# Development of a geospatial software module to support seed potato certification

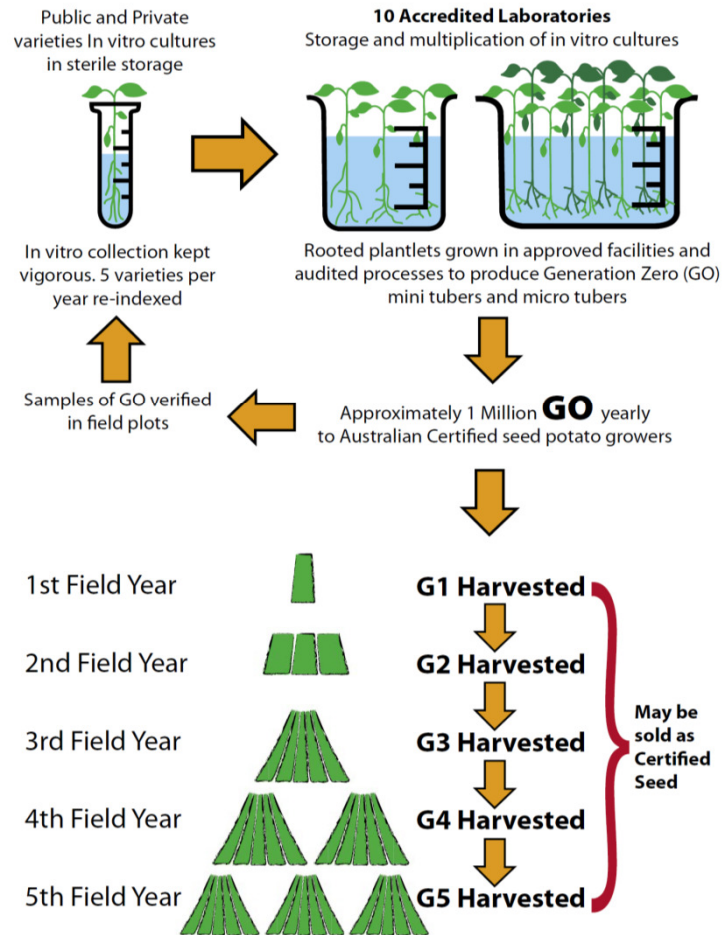


# Seed Potato Certification

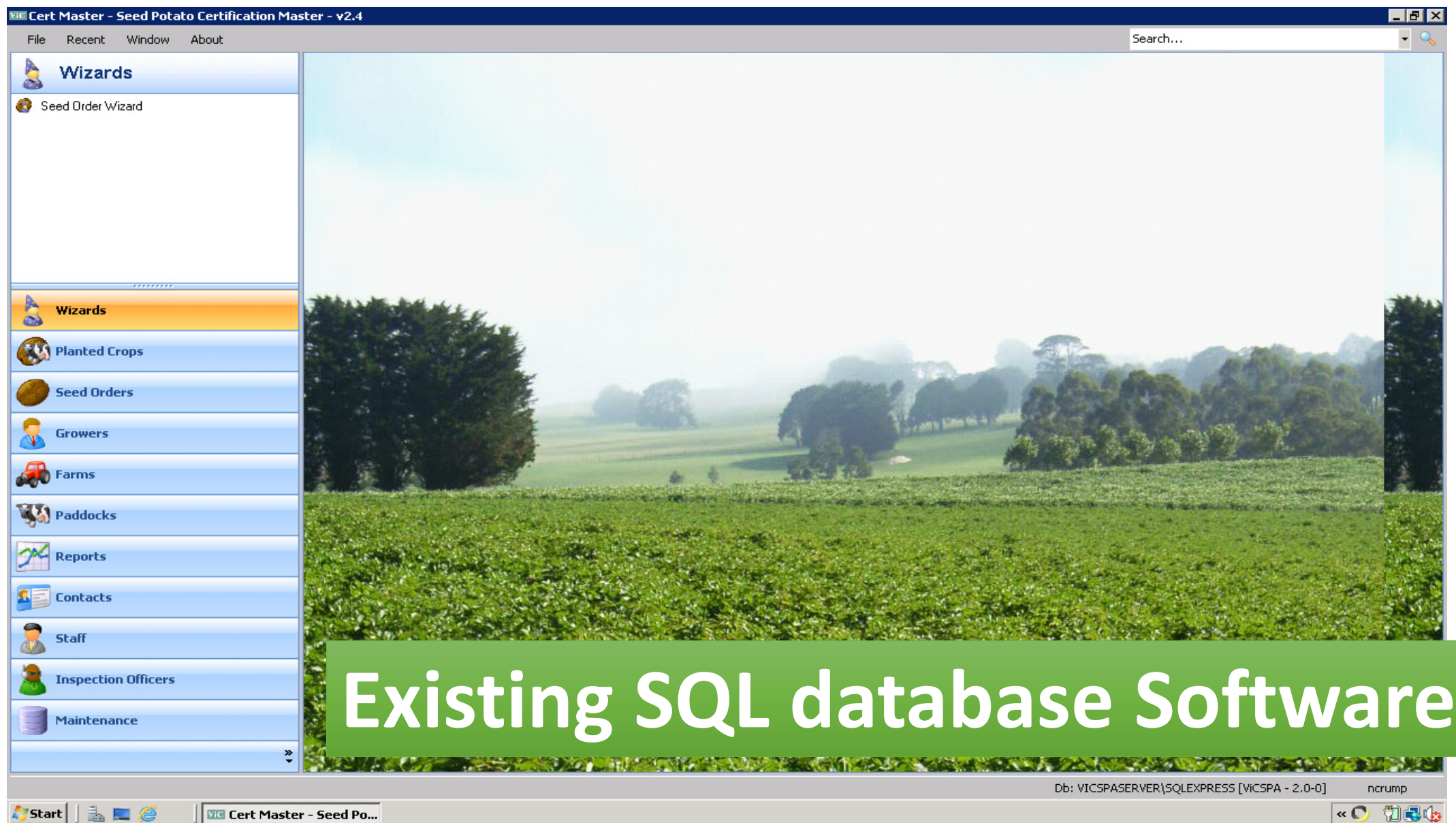
- ViCSPA is the seed potato certification authority
- In Victoria, around 1200ha of certified seed potatoes are submitted annually
- All fields used for seed potato production require lab tests for Potato Cyst Nematode
- Each seed potato crop, is visually inspected twice during the growing crop
- Lab diagnostics are used to support the visual inspections
- Currently, all crops must be leaf tested for Potato Virus Y

# ViCSPA

## Limited Generation Program

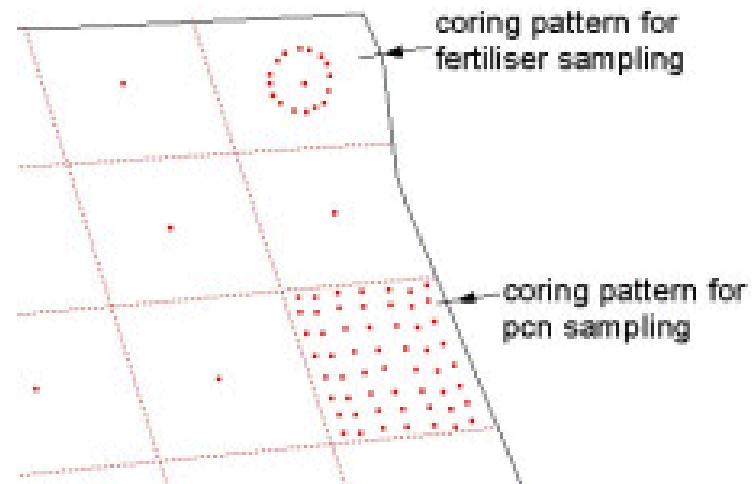








# POTATO CYST NEMATODE



All fields are soil sampled **10 x 10 m grid**  
Soil test performed on **500g soil for every 2 ha**

**MUST** be negative for certification  
**No seed farms with PCN infestations**

# POTATO CYST NEMATODE



## Notice to producers, processors and packers of Potato Cyst Nematode host produce

National reforms to PCN management, 1 November 2013



From 1 November 2013 there will be changes to how Potato Cyst Nematode (PCN) will be controlled. This follows recent negotiations between the states that will change land use practices and market access arrangements for host produce marketed nationally (except Western Australia).

Current interstate quarantine controls which are based on the treatment and certification of all host produce (*see definition*) sourced from within 20 km of a known PCN detection, will be replaced by property-based controls effective 1 November, 2013.

These changes represent the most significant national reforms made to PCN management since its first detection in Victoria in 1991. Focussing quarantine controls on movement pathways identified as being the highest risk for the spread and establishment of PCN enacts the key recommendations of the recently developed National PCN management plan.

The Victorian Department of Environment and Primary Industries (DEPI) has led the reforms and has expressed gratitude to interstate counterparts and industry for their assistance with the development of policies and protocols which enable these reforms to be enacted.

### Changes

From 1 November, 2013 all states and territories (except Western Australia) will enact uniform quarantine legislation that will provide for the following.

- Previous testing, movement controls and certification for host produce sourced from within 20km of a PCN detection will be removed.
- Movement of PCN host produce from PCN infested land and land linked to a PCN infestation will be regulated (requiring ICA44 certification to enter SA).
- All potatoes **marketed as seed** and potatoes sold for planting will require PCN testing.

South Australian entry requirements will be reflected in Condition 18 of PQS ver 10.0 (*see extract overleaf*).

Occupiers of land known to be infested or linked to a PCN infestation will be contacted by DEPI Victoria regarding these new controls regulating movement of PCN host produce from their properties.

The changes aim to ease trade restrictions whilst creating a national standard for the distribution of PCN host material, and manage the biosecurity risks associated with spreading the pest.

### News for 'linked' property growers

Under the new management regime, 'linked' growers will be able to continue marketing their crops to most markets under pre-existing accreditation arrangements.

### Please note

Movement of fruits, vegetables, soil, used packaging and agricultural equipment and machinery into interstate markets may be subject to additional quarantine conditions (eg Phylloxera, Fruit Fly and other pests. Always verify).

The requirements for sending PCN host material to Western Australia will remain unchanged.

PCN testing under ViCSPA since 1991 –  
**ALL farms must be negative for PCN on soil test**

**New National regulatory protocols for the management of PCN – require seed testing**

**IMPORTANTLY ALL SEED POTATOES FROM FIELDS WITH NO DETECTION OF PCN**

- **Buyer confidence**
- **Mitigate spread of PCN**
- **Importance of seed certification**

# Compliance with market entry requirements

- Documentation on field assessments and any lab reports
- Additional pest and disease assessments (as prescribed by conditions of entry)
- Record of any seed treatments
- Critical dates of harvest and packing
- TRACEABILITY – CERTIFICATION TAGS
- **IMPROVED TRACEABILITY WITH GEOREFENCES OF ALL FIELDS USED TO PRODUCE SEED POTATOES**





Enter a location

DISTRICT

GO

SAVE

GATE



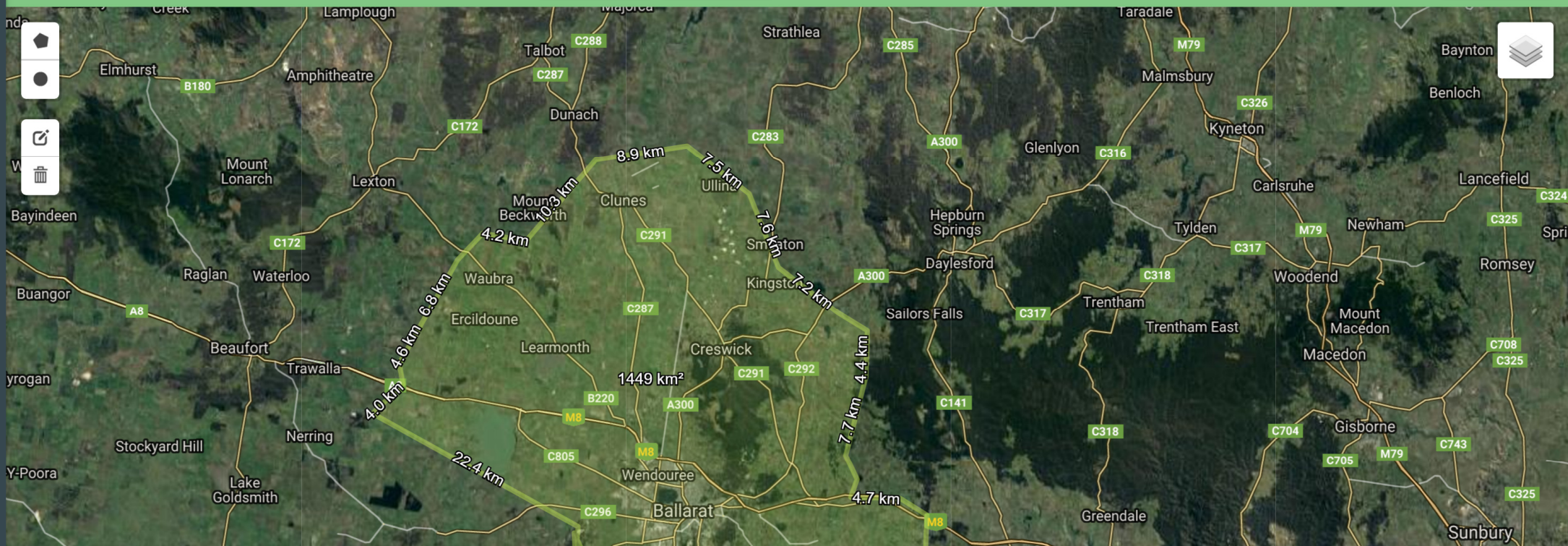
New Geospatial software module



Leaflet



SAVE



# Regional mapping/references



# Enhanced support for export trade





## Better response in biosecurity incursions



Stem symptoms of *Dickeya* infected potato include rapid death of tissues with stems retaining integrity. In typical blackleg, the tissues are mushy and fall apart easily.  
Photo by S. Johnson University of Maine



Tubers infected with *Dickeya* will be completely macerated and have a tapioca-like appearance. They may not have a rancid smell as they do when they are infected with *Pectobacterium*. Photo by S. Johnson University of Maine





Tomato Potato Psyllid in New Zealand is the vector that causes the disease Zebra Chip of potato. Recent detection of the insect in western Australia.





# AUSTRALIAN CERTIFIED SEED POTATOES

ViCSPA does not test for variety purity

**15 SA 5962 32744 2**

LOCATION: **SOUTH AUSTRALIA**

STATE: **SA**

VARIETY: Private



## RED RASCAL

GEN **3**

GROWER: **WARNER TRUST**

DATE PACKED:

DATE PRINTED: 13-10-2015

QA GROWER: No

PCN TESTED: 12060

**15 SA 5962 32744 2**

Modification to label will invalidate certification

Further details of the planting, top removal, harvest and grading dates and post-harvest fungicide and insecticide treatments for the lot certified are to be found on the Delivery Note.

**Refer to other side of label for definition of certification and growers declaration**

*ViCSPA provides seed certification and a range of other professional services to the Australian Potato Industry*

[www.vicspa.org.au](http://www.vicspa.org.au) email [vicspa@vicspa.org.au](mailto:vicspa@vicspa.org.au) Tel: 03 5962 0000

## ViCSPA PRODUCE OF AUSTRALIA

Traceability on the  
label issued with  
linkages to geospatial  
reference of origin