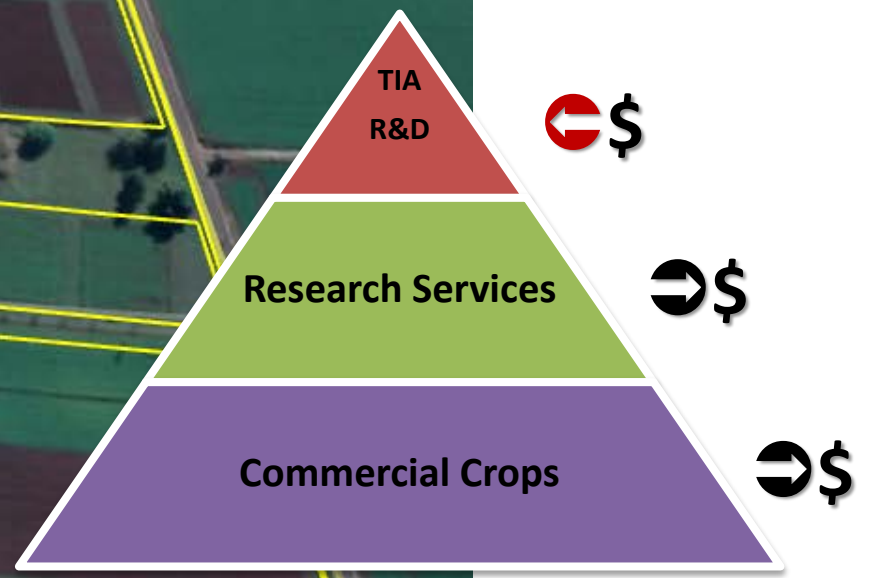




Welcome Forthside- Since 1963



How Forthside Works





tia
TASMANIAN
INSTITUTE OF
AGRICULTURE

The Tasmanian Institute of Agriculture acknowledges the following collaborators and supporters for enabling research at the Forthside Vegetable Research Facility.



TIA is a joint venture of the University of Tasmania and the Tasmanian Government





UNIVERSITY *of*
TASMANIA

Profit / Loss [Operational]

Average Turn Over = \$280, 000

<u>Year</u>	<u>P/L</u>
FY12-13	(29,008)
FY13-14	215,642
FY14-15	(91,765)
FY15-16	109,219
<hr/>	
Total	\$204,088

Average P/L Per Year \$51,022



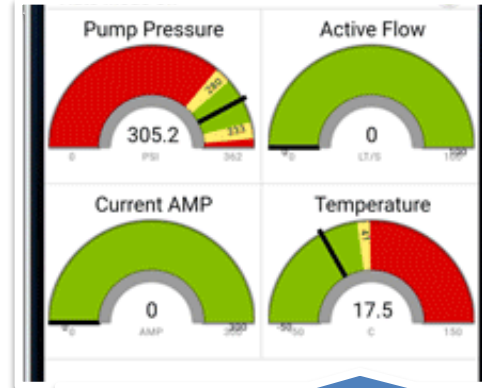
Contemporary Activities @Forthside



Seasonal Controlled
Traffic Farming & P-AG



Variety Trial Work



Remote Pump
Management



Long Term Soil Health
Site [13] yrs



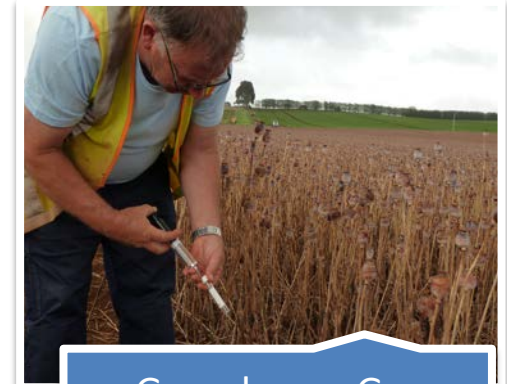
Pilot Training



Industrial Hemp



Biochar



Greenhouse Gas
Emissions

The Future

HOW CAN WE FUND IT? 



Come & Play with us in our sandpit



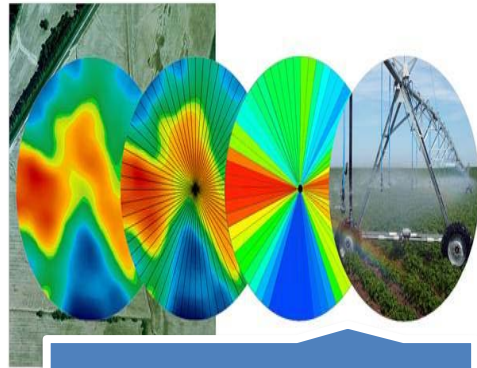


Proof of Concept

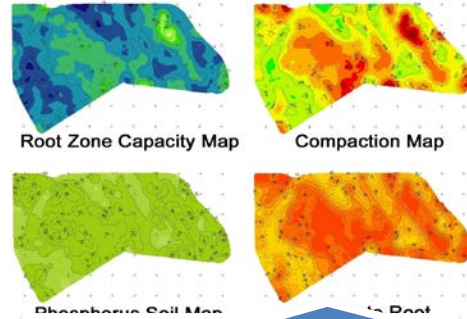


Yamaha UAV

Opportunities @Forthside



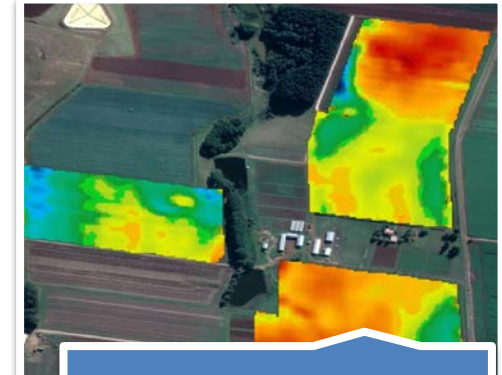
Irrigation Efficiency Mapping



Big Data for Management Decisions



Renewable Energy



Remote Sensing



Strip Tillage



New Crops



Wide Span Agriculture



Protected Cropping

