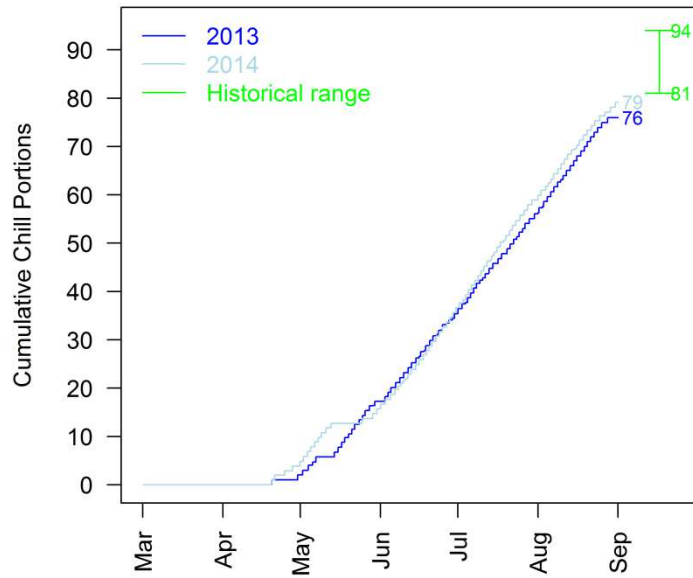
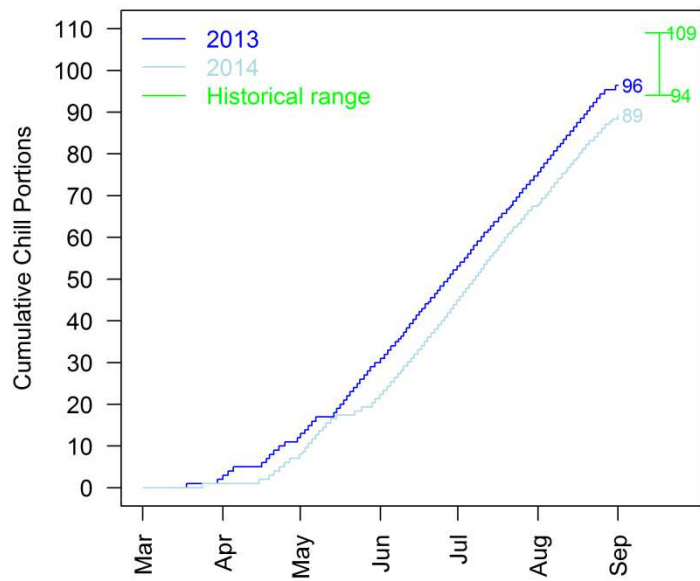


Regional chill accumulation - Victoria

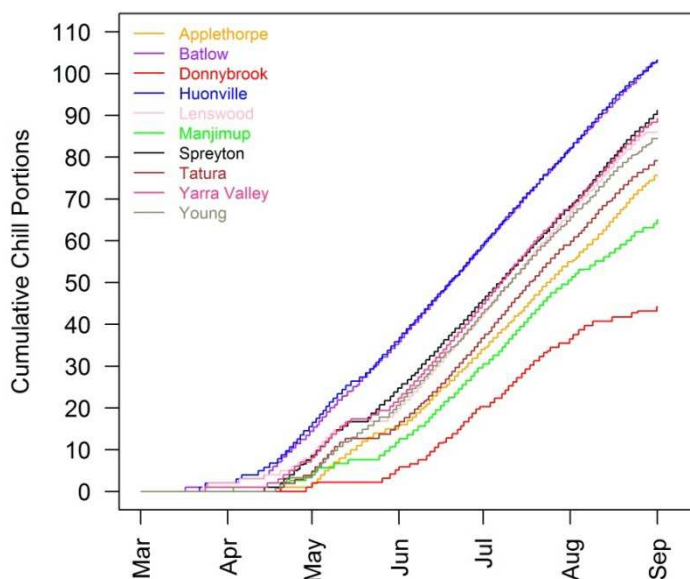
Tatura



Yarra Valley



Chill Accumulation 2014



Two collaborative projects are working to reduce the vulnerability of the Australian apple and pear industry to the potential impacts of climate change. The ability to accumulate sufficient winter chill in future climates is one aspect being considered through two projects.

The ***Crossing the threshold: Adaptation tipping points for Australian fruit trees*** project is supported by funding from the Department of Agriculture.

Understanding Apple and Pear production systems in a changing climate project is funded by Horticulture Innovation Australia using apple and pear industry levies and matched funds from the Australian Government.

This research is being undertaken at four locations: Tatura Victoria, Applethorpe Queensland, Manjimup Western Australia and Huon Tasmania in partnership with the Victorian Department of Economic Development, Jobs, Transport and Resources; the University of Melbourne; University of Tasmania; the Department of Agriculture and Fisheries Queensland; and the Department of Agriculture and Food Western Australia.

More information about both projects and contacts can be found on www.hin.com.au/projects

